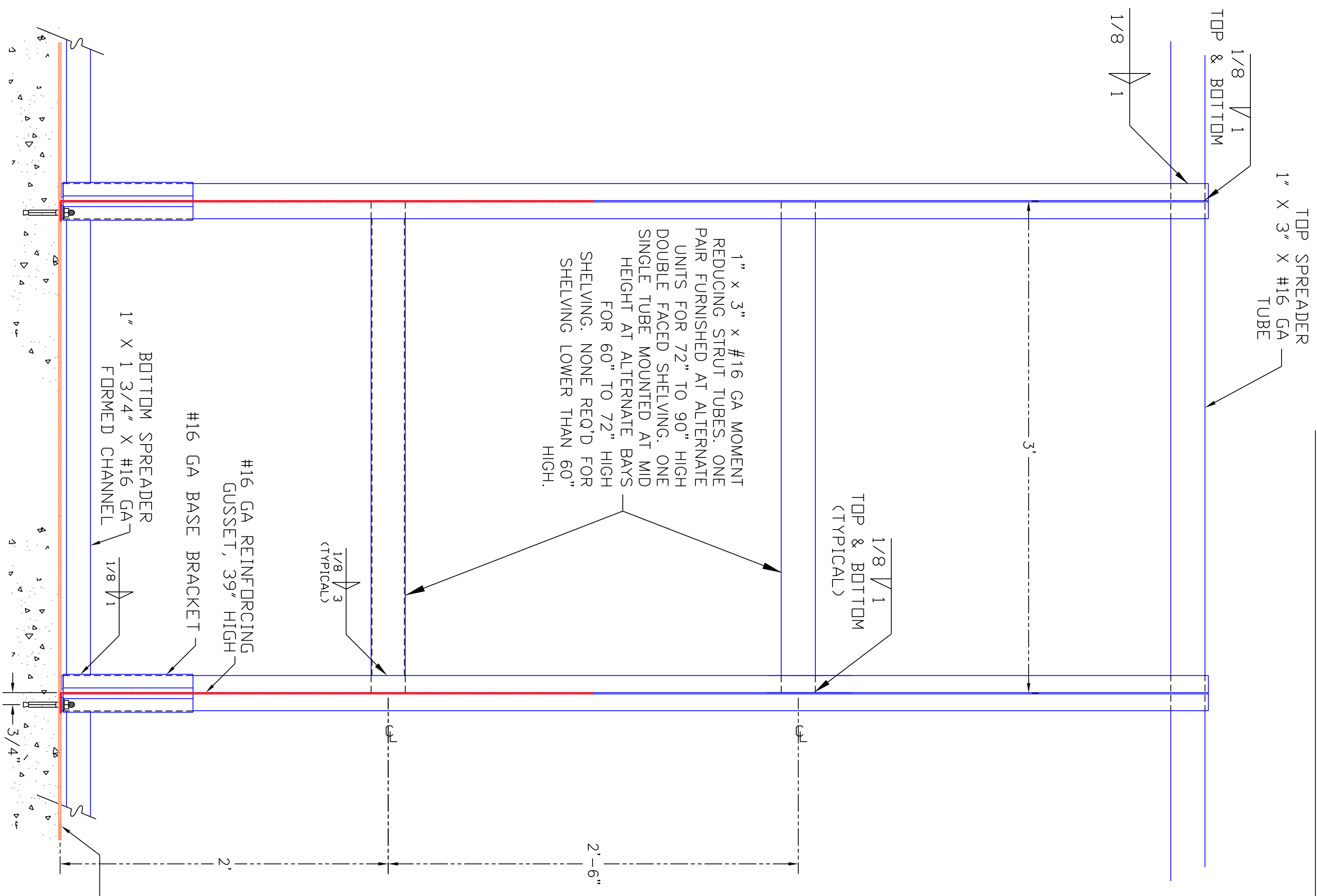
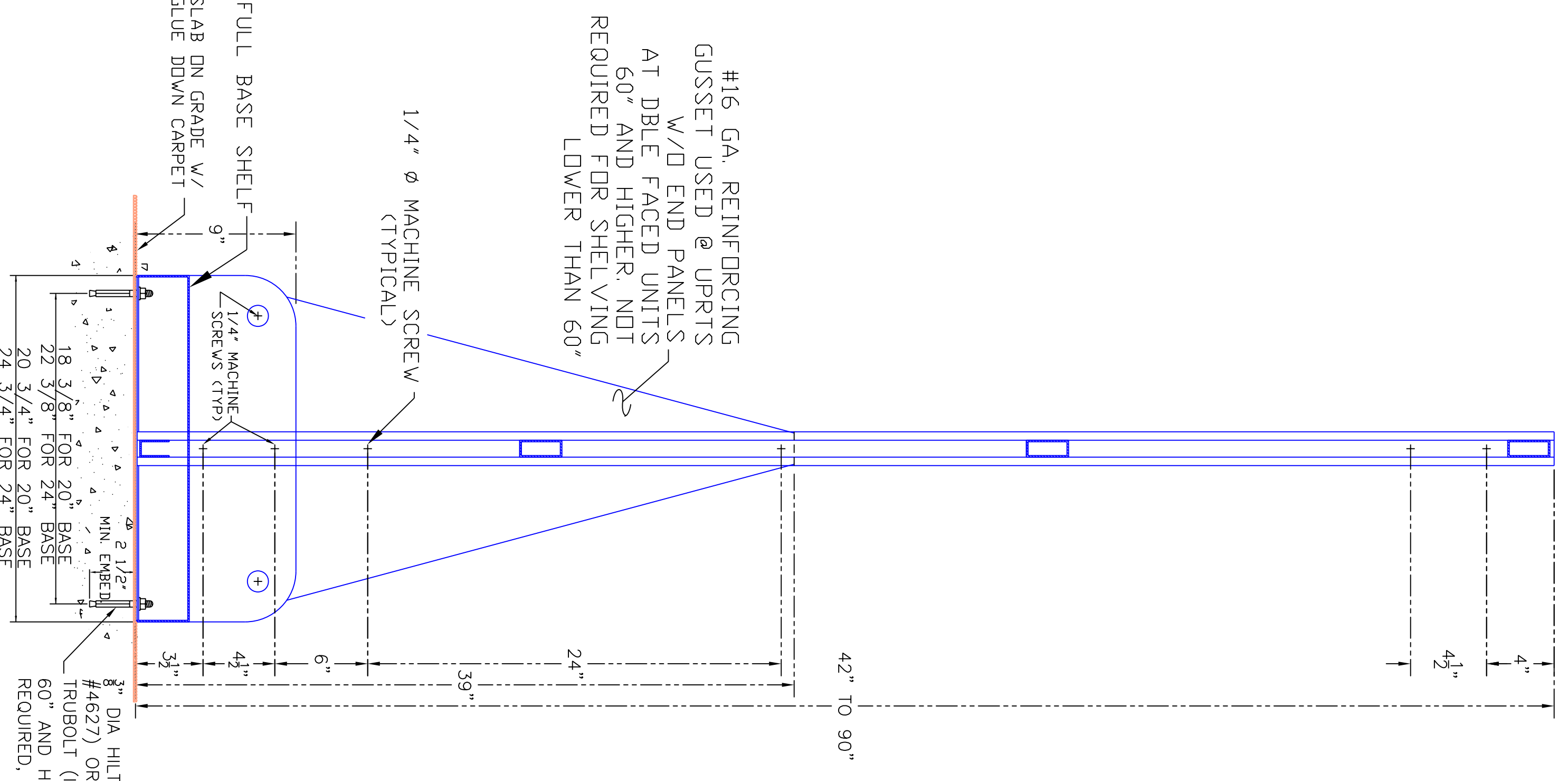


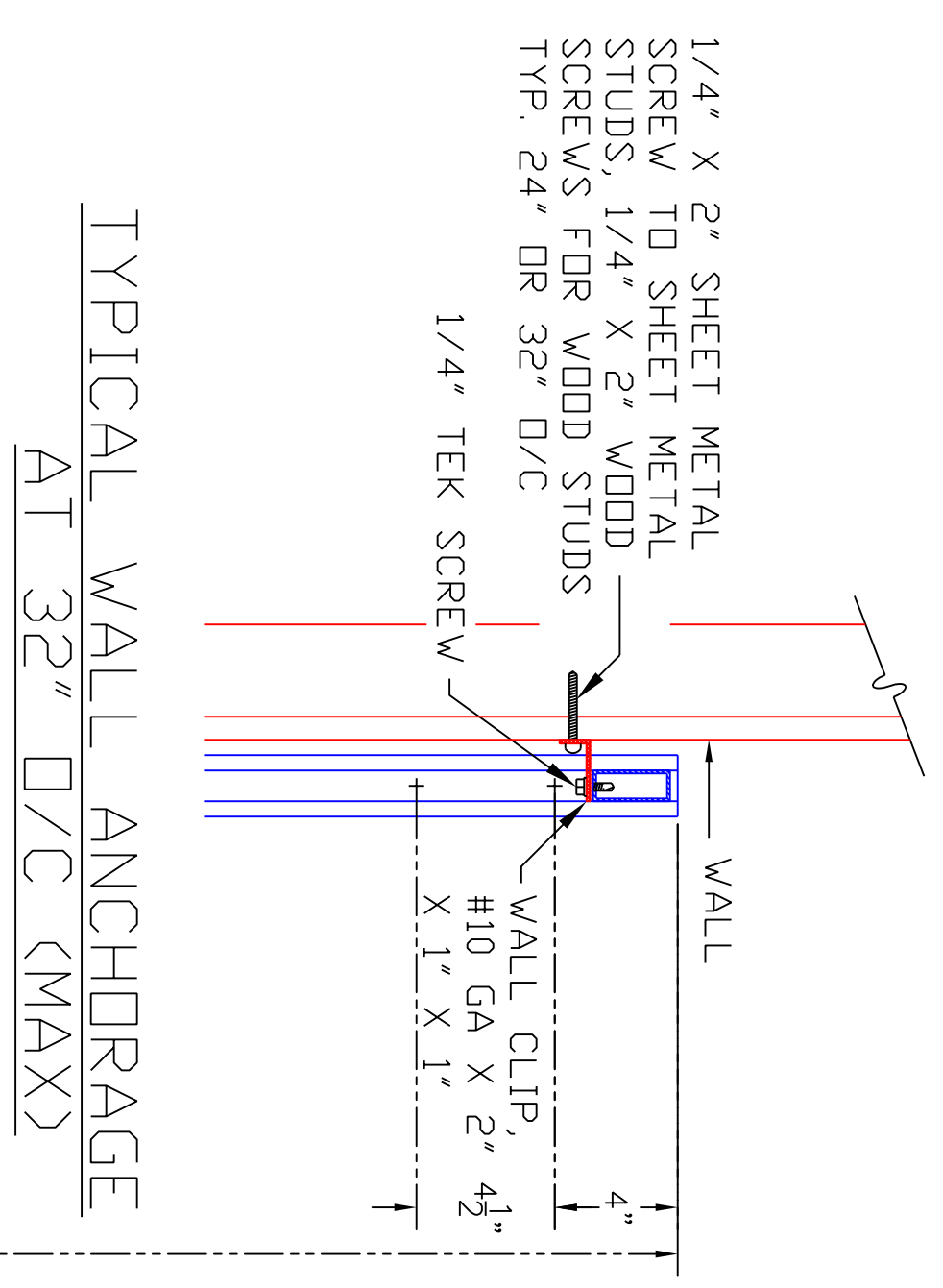
TOP VIEW OF ESTEY UPRIGHT



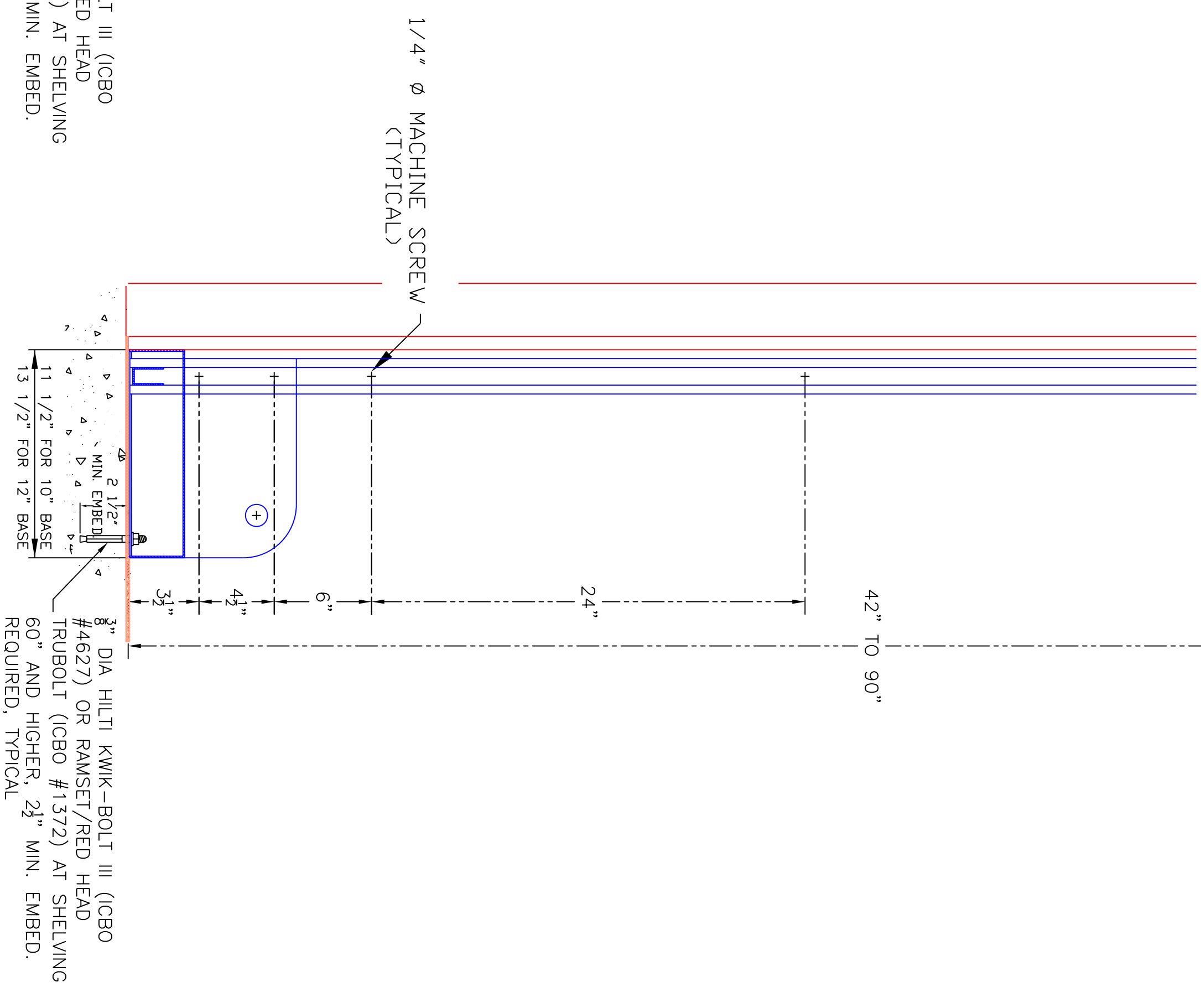
FRONT VIEW OF ESTEY STRUCTURE
(AT MOMENT FRAME)



SIDE VIEW OF ESTEY BASE
(DOUBLE FACED)



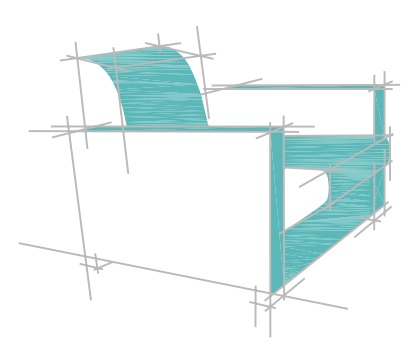
TYPICAL WALL ANCHORAGE
AT 32" O/C (MAX)



SIDE VIEW OF ESTEY BASE
(SINGLE FACED)

REVISIONS:

Ross McDonald CO., INC
Library Furniture & Shelving Solutions
1154 Stealth Street
Livermore, California 94551
tel 925.455.1635 fax 925.373.1227



DATE:

SCALE:
2" = 1'-0"

DRAWN BY:

STRUCTURAL BRACING DETAILS
FOR
ESTEY CANTILEVER SHELVING
CONCRETE FLOOR, CALIFORNIA